

Valves & Couplers  
Fittings & Lids





# Valves, Couplers, Fittings & Lids

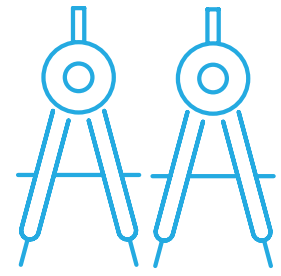
Norwesco is your complete source for the high-performance products required for your fluid handling needs.

We take pride in our ability to respond quickly and effectively to your needs with same day order processing.

## OUR CUSTOMER PROMISE TO YOU:

- Dependable Service
- High Quality Products
- Affordable Prices

Call Norwesco at **800-328-3420** or visit **[norwesco.com](http://norwesco.com)** for more information about our fluid handling products.



Meets Milspecs Guidelines

**Norwesco Cam Action Couplers** are manufactured to standardized dimensions and tolerances and work with couplers from any manufacturer that chooses the gold standard: **MIL-C-27487**.





# Table of Contents

---

## **p. 4-5 CAM ACTION COUPLERS & ADAPTERS**

- Manufactured from glass-reinforced polypropylene
- Interchangeable with other couplers and adapters

## **p. 6-7 VALVES**

Includes a wide variety of valves:

- Bolted Ball and Compact Ball Valves
- Single Union and Multi-Port Ball Valves
- Stainless Steel Ball Valves

## **p. 8-9 FLANGE BALL VALVES & FLANGE FITTINGS**

- Provides quick and easy assembly
- No pipe tape or sealant necessary

## **p. 10-11 THREADED POLYPROPYLENE FITTINGS**

Manufactured from glass-reinforced polypropylene for strength and durability and includes a wide variety of:

- Tees
- Crosses
- Elbows
- Nipples
- Hose Barbs

## **p. 12-13 BULKHEADS & BOLTED FITTINGS**

- Comes standard with EPDM gaskets or Viton gaskets as an option
- Offered in a variety of sizes and thread configuration in either polypropylene or stainless steel

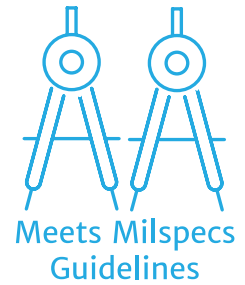
## **p. 14-15 STRAINERS & LIDS**

- A variety of strainers & screens to keep liquids clean and moving
- Lids for every polypropylene tank



# CAM ACTION COUPLERS & ADAPTERS

- Manufactured from glass reinforced polypropylene
- 304 stainless steel cam arms, pins, and clips with EPDM gaskets
- Built to **MIL-C-27487** size specifications and National Pipe Thread standards to ensure interchangeability with other brands of couplers
- 1/2" couplings interchange with all 3/4" couplings. Only the thread and hose barbs are 1/2". 1-1/4" and 1-1/2" couplings interchange in the same manner.



**Norwesco Cam Action Couplers** are manufactured to the standardized dimensions and tolerances and work with couplers from any manufacturer that chooses the gold standard: **MIL-C-27487**.

1/2 to 2"	100 psi	125 psi	70 psi
	0° F	70° F	150° F
3" to 4"	70 psi	90 psi	50 psi

## 'A' Male Adapter Female Thread

Size	Part No.
1/2"	61199
3/4"	61207
1"	61215
1 1/4"	61223
1 1/2"	61231
2"	61239
3"	61247
4"	62789



## 'B' Female Coupler Male Thread

Size	Part No.
1/2"	61255
3/4"	61259
1"	61263
1 1/4"	61267
1 1/2"	61271
2"	61275
2" (Long)	63961
3"	61279
3" (Long)	63962
4"	62790



## 'C' Female Coupler Hose Shank

Size	Part No.
1/2"	61256
3/4"	61260
1"	61264
1 1/4"	61268
1 1/2"	61272
2"	61276
3"	61280
3" (3 arms)	64136
4"	62791



## 'D' Female Coupler Female Thread

Size	Part No.
1/2"	61257
3/4"	61261
1"	61265
1 1/4"	61269
1 1/2"	61273
2"	61277
3"	61281
4"	62792



## 'E' Male Adapter Hose Shank

Size	Part No.
1/2"	61203
3/4"	61211
1"	61219
1 1/4"	61227
1 1/2"	61235
2"	61243
3"	61251
4"	62793



## 'F' Male Adapter Male Thread

Size	Part No.
1/2"	61204
3/4"	61212
1"	61220
1 1/4"	61228
1 1/2"	61236
2"	61244
3"	61252
4"	62794





## 90° 'A' Male Adapter Female Thread

Size	Part No.
1 1/2"	61293
2"	61296



## 90° 'C' Female Coupler Hose Shank

Size	Part No.
1 1/2"	61299
2"	61301



## 90° 'D' Female Coupler Female Thread

Size	Part No.
1 1/2"	61300
2"	61302



## 90° 'F' Male Adapter Male Thread

Size	Part No.
1 1/2"	61289
2"	61291



## 'DC' Dust Cap for Male Adapter

Size	Part No.
1/2"	61258
3/4"	61258
1"	61266
1 1/4"	61274
1 1/2"	61274
2"	61278
3"	61282
4"	62795



## 'DP' Dust Plug for Female Coupler

Size	Part No.
1/2"	61214
3/4"	61214
1"	61222
1 1/4"	61238
1 1/2"	61238
2"	61246
3"	61254
4"	62796



## Specialty Couplings

Size	Part No.
3" male adapter x 2" male adapter	64133
3" male adapter x 3" male adapter	64134
3" female coupler x 2" male adapter	64135



4" female fittings (B, C, D, and DC)  
all have 3 arms as per standard  
MIL-C-27487



1-1/4", 1-1/2", and 2" Couplers  
come with locking pins





# BOLTED BALL, COMPACT BOLTED, NOZZLE VALVES

- Manufactured from glass-reinforced polypropylene for strength and durability — will never rust or corrode
- Self-aligning ball rotates freely against Teflon seats
- Unique body-to-flange design allows for low torque on/off operation
- Viton O-ring stem seal and EPDM O-ring body seal
- Available with blue Norwesco handle or blank yellow handle
- All valves tested by air pressure under water

1/2 to 3"	100 psi	125 psi	70 psi
	0° F	70° F	150° F
4"	70 psi	90 psi	500 psi



## Full Port Bolted FPT x FPT

Size	Bolts	Part No.
1/2"	4	60540
3/4"	4	60541
1"	4	60543
1 1/4"	4	60527
1 1/2"	4	60526
2"	6	60528
3"	6	61720
4"	6	62787



## Bolted MPT x FPT (Ideal for tanks)

Size	Bolts	Part No.
2" standard	4	62046
2" full	6	61876
3" full	6	62047



## Standard Port Bolted FPT x FPT

Size	Bolts	Part No.
1"	4	60542
1 1/4"	4	61734
2"	4	60529



## Nozzle Valves (Bolted Ball and Single Union)

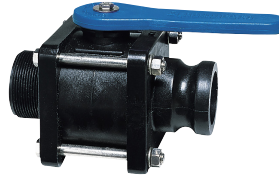
Size	Bolts/Union	Part No.
1" 45°	single union	60479
1 1/2" full	6	60544
2" std	6	60545
2" full	6	60546





## 2" Full Port Compact

Connections	Bolts	Part No.
MPT X FPT	4	62286
FPT X FPT	4	62287
FPT X Male Adapter	4	62314
MPT X Male Adapter	4	62288



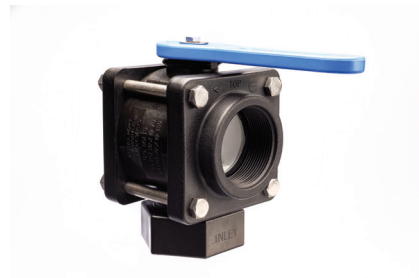
## Single Union Full Port

- Manufactured from polypropylene
- Teflon seats
- EPDM O-rings (Viton kits available)
- All valves tested by air pressure under water



Size	Part No.
1/2"	60409
3/4"	60410
1"	60411
1 1/4"	60412
1 1/2"	60413
2"	60414
3"	60415

## Multi-Port Ball



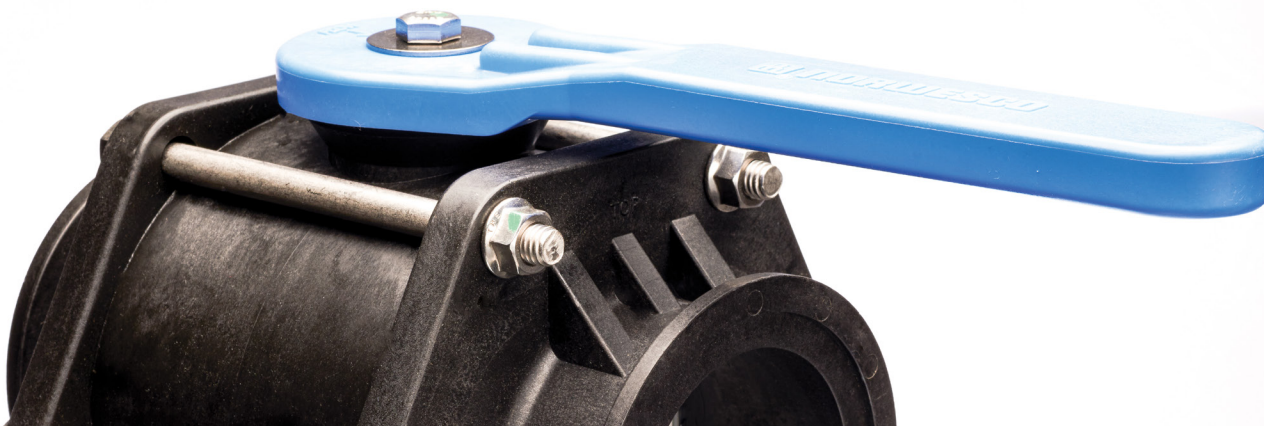
Size	Part No.
2" Bolted side-load	64258
2" Bolted bottom-load	64139
3/4" True Union (Full port)	60417
2" Multi Port (Std port)	60418

## Stainless Steel Full Port

- Manufactured from 316 stainless steel
- Full port construction
- Water, oil and gas rated to 1000 PSI
- Lockable handle
- Teflon seats and seals
- Polished stainless steel ball for precise operation
- Tested by air pressure under water



Size	Part No.
1/2"	60481
3/4"	60482
1"	60483
1 1/2"	60485
2"	60487
3"	60488

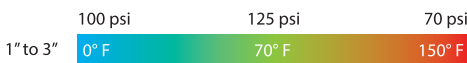




# FLANGE BALL VALVES & FITTINGS

- Quick and easy assembly – No thread tape or sealant necessary
- Positive seals
- Easy on/off hose connection
- 360° orientation
- Valves and fittings are manufactured from glass-reinforced polypropylene for strength and durability — will never rust or corrode

All Norwesco flange fittings are full port and mate with other manufacturers 1" = 100, 1 1/2" = 200, 2"= 220, 3"= 300



## Flange Ball Valves

- Self-aligning ball rotates freely against Teflon seats
- Unique body-to-flange design allows for low torque on/off operation
- Viton O-ring stem seal and EPDM O-ring body seal
- Available with blue Norwesco handle or blank yellow handle
- Pressure rated at 125 PSI@ 70 degrees F
- All valves tested by air pressure under water

## Flange 3-Way

Size	Type	Part No.
2"	Side Load	64138
3"	Bottom Load	64140



## Flange Clamps Stainless Steel

Size	Part No.
1"	62932
2"	62933
3"	62934

## Flange Gasket EPDM

Size	Part No.
1"	62935
2"	61574
3"	61575



## Flange Full Port

Size	Bolts	Part No.
1"	4	63027
1 1/2"	4	64256
2"	4	63122
3"	6	63124



## Flange Tee

Size	Part No.
1"	62912
2"	63100
3"	63111



## Flange Elbow

Size	Part No.
1"	62913
2"	63101
2" 45°	64483
3"	63112



## Flange Coupling

Size	Part No.
1"	62914
2"	63102
3"	63113



## Flange x MPT

Size	Part No.
1" Flange x 3/4" MPT	63098
1" Flange x 1" MPT	62915
1" Flange x 1 1/4" MPT	63099
2" Flange x 2" MPT	63103
3" Flange x 3" MPT	63114



## Flange x FPT

Size	Part No.
1" Flange x 1" FPT	62916
2" Flange x 2" FPT	63104



## Flange x HB

Size	Part No.
1" Flange x 3/4" HB	62917
1" Flange x 1" HB	62918
1" Flange x 1 1/4" HB	62919
2" Flange x 1 1/2" HB	63105
2" Flange x 2" HB	63106
3" Flange x 2" HB	63115
3" Flange x 3" HB	63116



## Flange x HB 90°

Size	Part No.
1" Flange x 3/4" HB 90°	62920
1" Flange x 1" HB 90°	62921
1" Flange x 1 1/4" HB 90°	62922
2" Flange x 1 1/2" HB 90°	63107
2" Flange x 2" HB 90°	63108
3" Flange x 2" HB 90°	63117
2" Flange x 3" HB 90°	63118



## Flange Cross

Size	Part No.
1"	62923
2"	63109
3"	63119



## Flange Plug

Size	Part No.
1"	62924
1" w 1/4" FPT	62925
2"	63110
3"	63120



## Flange Reducing Coupling

Size	Part No.
2" Flange x 1" Flange	62927
2" Flange x 1 1/2" Flange	64250
3" Flange x 1" Flange	64893
3" Flange x 2" Flange	62928



## Flange x Male Coupler

Size	Part No.
2" Flange x 2" Male Coupler	62926
3" Flange x 3" Male Coupler	63121
2" Flange x 2" HB	64405
3" Flange x 3" HB	64404



## Flange Sweep 90's

Size	Part No.
2" Flange x 2" Flange	64484
2" Flange x 2" MPT	64406
2" Flange x 2" Hose Barb	64405
2" Flange x 2" Male Adapter	64137
3" Flange x 3" Hose Barb	64404
3" Flange x 3" MPT	64403





# THREADED POLYPROPYLENE FITTINGS

- Manufactured from glass-reinforced polypropylene for strength and durability
- Schedule 80 design
- National pipe thread



## Tees

Size	Part No.
3/8"	62464
1/2"	62209
3/4"	62210
1"	62211
1 1/4"	62212
1 1/2"	62213
2"	62190
3"	62214



## Elbows

Size	Part No.
3/8"	62465
1/2"	62215
3/4"	62216
1"	62217
1 1/4"	62218
1 1/2"	62219
2"	62191
3"	62220



## 90° Street Elbows

Size	Part No.
3/8"	62460
1/2"	62243
3/4"	62244
1"	62245
1 1/4"	62246
1 1/2"	62247
2"	62199
3"	62248



## 45° Street Elbows

Size	Part No.
3/4"	62907
1"	62908
1/4"	62909
1 1/2"	62910
2"	62911



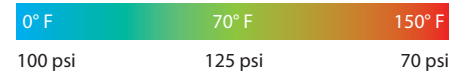
## Crosses

Size	Part No.
3/4"	62262
1"	62263
1 1/4"	62264
1 1/2"	62265
2"	62202



## King Nipples

Size	Part No.
1/2"	61303
3/4"	61304
1"	61305
1 x 1" 90°	64153
1 1/4" x 1" 90°	62469
1 1/2"	61319
2"	61861
3"	61321
4"	62468



## Straight Nipples

Size	Part No.	Size	Part No.
3/8" x short	62459	1 1/4" x 6"	62228
1/2" x short	62221	1 1/2" x short	60547
1/2" x 3"	62222	1 1/2" x 4"	62229
3/4" x short	60554	1 1/2" x 6"	62230
3/4" x 4"	62223	2" x short	60548
3/4" x 6"	62224	2" x 4"	62192
1" x short	60555	2" x 6"	62193
1" x 4"	62225	3" x short	61769
1" x 6"	62226	3" x 6"	62232
1 1/4" x short	60556	4" x short	62467
1 1/4" x 4"	62227		



## Reducer Nipples

Size	Part No.
1/2" x 3/8"	62455
3/4" x 1/2"	62233
1" x 1/2"	62456
1" x 3/4"	62234
1 1/4" x 3/4"	62457
1 1/4" x 1"	62235
1 1/2" x 1"	62458
1 1/2" x 1 1/4"	62236
2" x 1 1/2"	60549
3" x 2"	61768
4" x 3"	62938



## Reducer Bushings

Size	Part No.
3/8" x 1/4"	62466
1/2" x 1/4"	62267
1/2" x 3/8"	62268
3/4" x 1/8"	62269
3/4" x 1/4"	62270
3/4" x 3/8"	62271
3/4" x 1/2"	62272
1" x 1/8"	62273
1" x 1/4"	62274
1" x 1/2"	62275
1" x 3/4"	62276
1 1/4" x 3/4"	62277
1 1/4" x 1"	62278
1 1/2" x 3/4"	62279

Size	Part No.
1 1/2" x 1"	62280
1 1/2" x 1 1/4"	62281
2" x 3/4"	62195
2" x 1"	62196
2" x 1 1/4"	62197
2" x 1 1/2"	62198
3" x 1 1/2"	62282
3" x 2"	60330



## Caps

Size	Part No.
1/2"	62462
3/4"	62250
1"	62251
1 1/4"	62463
1 1/5"	62253
2"	62200
3"	62254



## Plugs

Size	Part No.
1/2"	62255
3/4"	62256
1"	62257
1 1/4"	62258
1 1/5"	62259
2"	62201
3"	62260



## Couplings

Size	Part No.
3/8"	62461
1/2"	62237
3/4"	62238
1"	62239
1 1/4"	62240
1 1/5"	62241
2"	62194
3"	62242





# BULKHEADS & BOLTED FITTINGS

## Polypropylene Bulkheads

- Supplied with EPDM gaskets – optional Viton available
- See [www.norwesco.com](http://www.norwesco.com) for a full listing of specifications, gasket and siphon tube options, and torque charts

### Polypropylene Bulkheads Double Threaded

- Bulkheads marked Std (standard duty) are for thinner tank walls
- Bulkheads marked HD (heavy duty) are for thicker tank walls

Size	Hole Size	Part No.
1/2"	1 7/16"	62834
3/4"	1 7/16"	60401
3/4" HD	1 5/8"	62798
1 "	2 1/4"	60427
1 1/4"	2 1/4"	60403
1 1/2" STD	2 3/8"	63931
1 1/2"	3"	60124
2"	3"	60405
2" STD	3"	63481
2" HD	3 1/4"	63683
3"	4 1/2"	62299
4"	5 3/4"	62171



### Self-Aligning Bulkhead

- For installations in tank domes where a vertical connection is required
- Only to be installed above liquid level

Size	Hole Size	Part No.
2"	4 1/2"	63668



### Anti-Vortex Bulkhead

Size	Hole Size	Part No.
1 1/4"	2 1/4"	63065



### MPT Vent Caps & Anti-Vortex

Size	Part No.
2" screened vent	63266
2" screenless vent/anti-vortex	63316
2" anti-vortex only	62399
3" screened vent	63845



### Polypropylene Bolted Double Threaded

- 316 stainless steel bolts
- EPDM gaskets (2) standard – optional Viton available
- 2" / 3" fittings available with encapsulated interior bolts

Size	Part No.
3/4"	60502
1 "	60505
1 1/2"	60513
2"	60516
2" Encapsulated	64216
3"	62471
3" Encapsulated	64217

## Polypropylene Total-Drain

- For complete drainage in floor/sump installations
- 316 stainless steel bolts / EPDM gaskets

Size	Bolts	Part No.
2"	4	62470
3"	6	62472



## Stainless Steel Full Coupling Bolted

- 316 s/s and EPDM gasket
- Optional gaskets in Viton or X-Linked polyethylene
- Double threaded coupler passes through tank wall

Size	Bolts	Part No.
3/4"	4	64251
1"	4	64252
1 1/2"	4	64253
2"	4	64202
3"	6	64195
4"	8	64254



## Stainless Steel Bolted

- 316 s/s and EPDM gaskets standard
- Optional Viton gaskets available
- Designed for installation in thick tank walls

Size	Bolts	Part No.
1"	4	63972
1 1/2"	4	63973
2"	4	63974
3"	6	64194





# Y-LINE AND T-LINE STRAINERS

- Manufactured from polypropylene. Y-Line series is glass-reinforced
- Standard with EPDM gaskets
- Easy access to the straining element for cleaning
- 1/2" to 2" Y-Line strainers feature overmolded screens colored according to ISO/FDIS-19372
- 3" Y-Line screens are stainless steel with a polypropylene reinforcing frame
- 12 to 100 mesh screens constructed from 304 stainless steel

## Y-Line Strainer

1/2" to 2"	70 psi	90 psi	50 psi
	0° F	70° F	150° F
3"	55 psi	70 psi	40 psi

## T-Line Strainer

1/2" to 1"	80 psi	100 psi	56 psi
	0° F	70° F	150° F

## Y-Line Strainers

Size	Part No.	Size	Part No.	Size	Part No.	Size	Part No.
1/2" 20 mesh	64169	1" 50 mesh	64295	2" 20 mesh	64275	3" 12 mesh	62338
1/2" 50 mesh	64170	1" 100 mesh	64296	2" 50 mesh	64276	3" 20 mesh	62339
1/2" 80 mesh	64171	1 1/4" 20 mesh	64297	2" 100 mesh	64277	3" 40 mesh	62340
1/2" 100 mesh	64172	1 1/4" 50 mesh	64298				
3/4" 20 mesh	64173	1 1/4" 100 mesh	64299				
3/4" 50 mesh	64174						
3/4" 80 mesh	64175	1 1/2" 20 mesh	64272				
3/4" 100 mesh	64176	1 1/2" 50 mesh	64273				
1" 20 mesh	64294	1 1/2" 100 mesh	64274				



## Y-Line Strainer Screens (1/2" to 2")

Size	Part No.	Size	Part No.	Size	Part No.
20 mesh 1/2", 3/4"	64177	20 mesh 1", 1 1/4"	64300	20 mesh 1 1/2", 2"	64260
50 mesh 1/2", 3/4"	64178	50 mesh 1", 1 1/4"	64292	50 mesh 1 1/2", 2"	64261
80 mesh 1/2", 3/4"	64179	100 mesh 1", 1 1/4"	64293	100 mesh 1 1/2", 2"	64262
100 mesh 1/2", 3/4"	64180				

## Y-Line Strainer Screens (3")

Size	Part No.	Size	Part No.
12 mesh 3"	62249		
20 mesh 3"	62252		
40 mesh 3"	62261		
80 mesh 3"	62400		

20 Mesh



50 Mesh



80 Mesh



100 Mesh



## T-Line Strainers

Size	Part No.
1/2" 20 mesh	64281
1/2" 40 mesh	64282
1/2" 80 mesh	64283
3/4" 20 mesh	64284
3/4" 40 mesh	64285
3/4" 80 mesh	64286
1" 20 mesh	64287
1" 40 mesh	64288
1" 80 mesh	64289



## T-Line Replacement Screens

Size	Part No.
20 mesh	61404
40 mesh	61405
80 mesh	61406



See [www.norwesco.com](http://www.norwesco.com) for complete details on spare parts, operating pressures, and standard packaging.

## TANK LIDS

- All thread-in lids are manufactured from high density polyethylene
- Hinged lids are manufactured from a unique co-polymer for additional strength and durability
- Norwesco recommends replacing lost or broken lids with a complete ring and lid assembly
- All 22", 16" and 8" lids are available in vented and non-vented versions
- Hinged lids have a locking tab which can be secured with any standard padlock

### 5" Lids

Description	Part No.
*Vented lid ball check and gasket	63484
Vented lid 2" FPT center	63264
Ventless hinged lid	63673



### 8" Lids

Description	Part No.
Vented lid & ring assembly	60032
*Vented lid for molded-in threads	63480



### 16" Lids

Description	Part No.
Vented lid & ring 4" removable center	60038
*Vented lid & ring blue snap in vent	63485
Vented lid & ring 3" FPT center	63868
Ventless lid & ring	60367



### 16" Strainer Basket

Description	Part No.
For use with 16" threaded lids	67374



### 18" & 24" Lids

Description	Part No.
24" vented lid & ring assembly	64443
*18" vented lid & ring assembly	64448



### 22" Lids

Description	Part No.
*Vented lid & ring assembly	63679
Ventless lid & ring assembly	63863



### Hinged Lid Assemblies

Description	Part No.
*16" Vented	62532
16" Ventless	63390
22" Vented	63874
22" Ventless	64190



\* Photo is shown





Call Norwesco for your fluid handling needs.

4365 Steiner Street  
P.O. Box 439  
St. Bonifacius, MN 55375-0439  
Tel (800) 328-3420  
Fax (800) 874-2371

---

Norwesco is your complete source for the high-performance valves, couplers, fittings, and lids required in agricultural and industrial fluid handling applications.

---

Norwesco valves, couplers, fittings, and lids are used by these premium brands and manufacturers.

**THE  
HANDLER**

**SNI SNYDER**  
INDUSTRIES

**Bushman**<sup>TM</sup>

**DURACAST**

**CHEM-TAINER**

